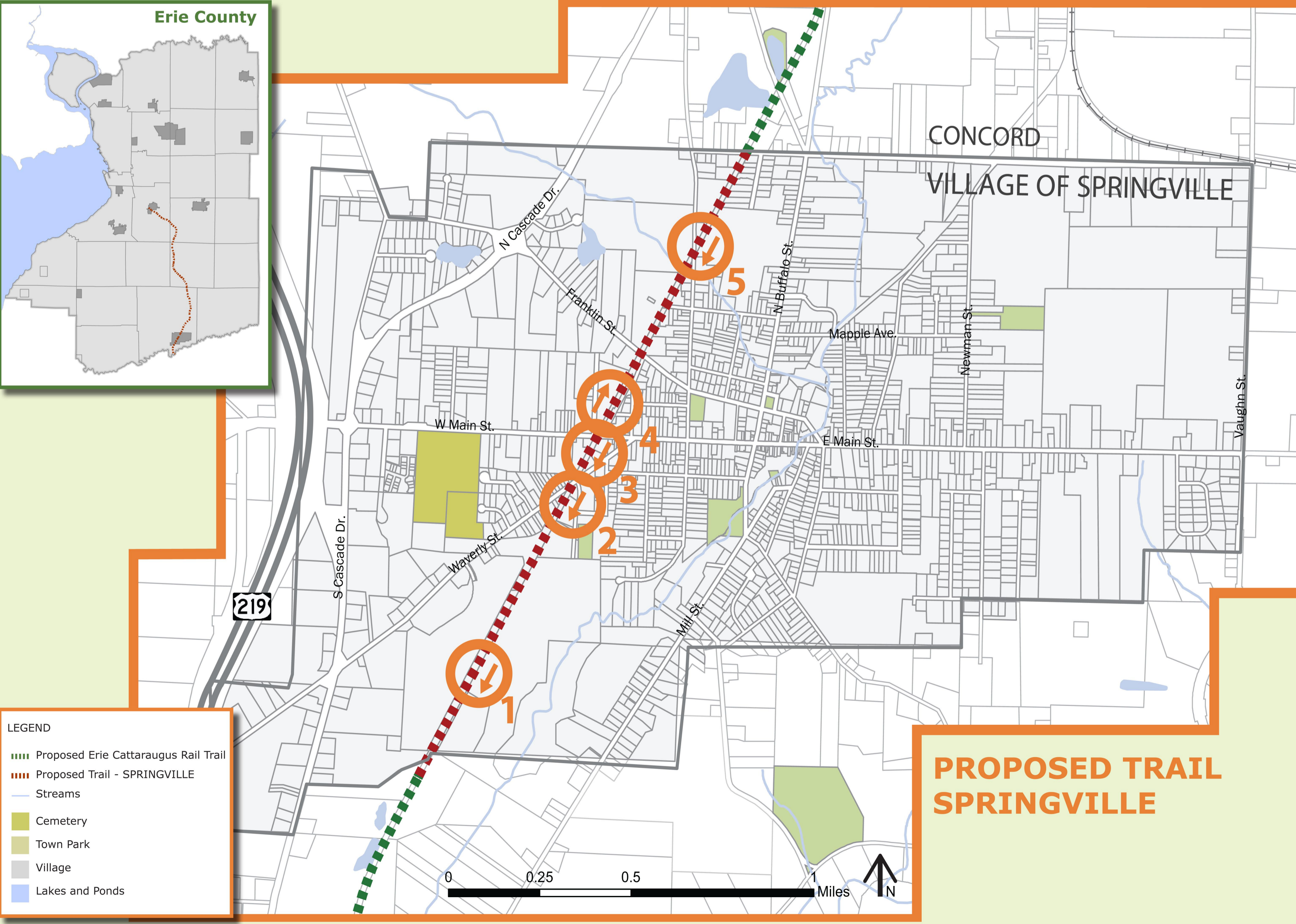
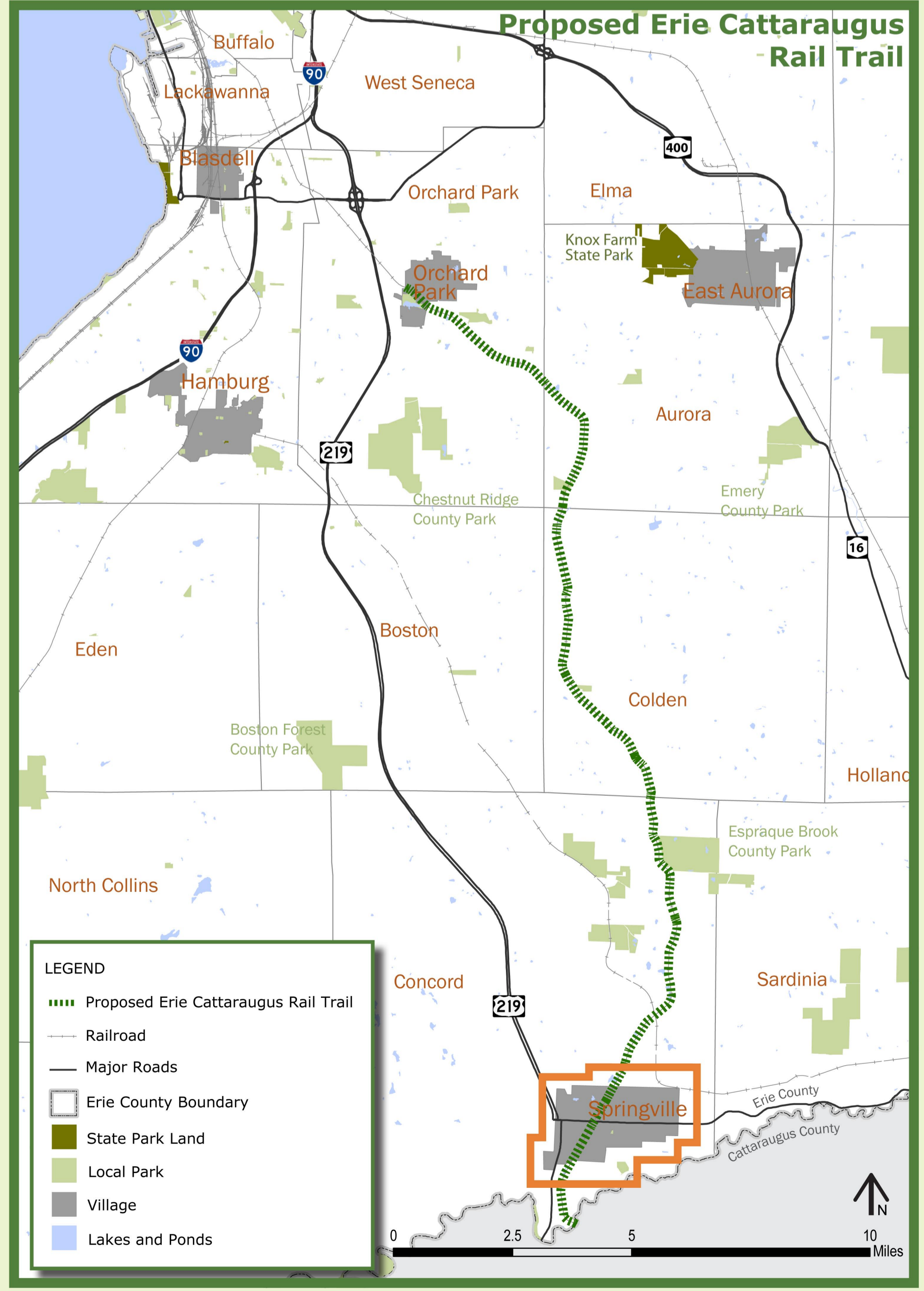


A Vision To Preserve The Buffalo & Pittsburgh Railroad Corridor



A Trail from North Street to the southern Village Border – Springville

Supported in part by Erie Cattaraugus Rail Trail, Inc., the Village of Springville and a grant from Parks & Trails New York, funded by the Healthy Heart Program of the NYS Department of Health



INTRODUCTION

The following examples are intended to provide a picture of what the B&PR right-of-way might look like if developed as a rail trail and be a starting point in a community conversation. The visualization is not the only option or final word on trail development. It remains for the residents of Springville to decide what is best for their community.

CURRENT CONDITIONS

The 1.8 mile right of way in Springville is a small segment of the 27.6 mile abandoned section of the Buffalo & Pittsburgh Railroad. In 2010 the corridor was cleared, graded and the rails and ties removed. The right of way is 66' wide at North Street and 100' wide at the southern village boarder. Between Main and Waverly streets the right-of-way is 66' wide. It is accessible from North, N. Central, Franklin, Main and Waverly Streets. The right-of-way is adjacent to the Springville Griffith High School athletic fields and the village historic business district. Today, residents trespass on the right of way and use it as an unofficial snowmobile, hiking, biking, dog walking, x-country ski and equestrian trail.

PROPOSED TRAIL SPRINGVILLE