



# Erie Cattaraugus Rail Trail

## Concord & Springville Community Overview





# Erie Cattaraugus Rail Trail

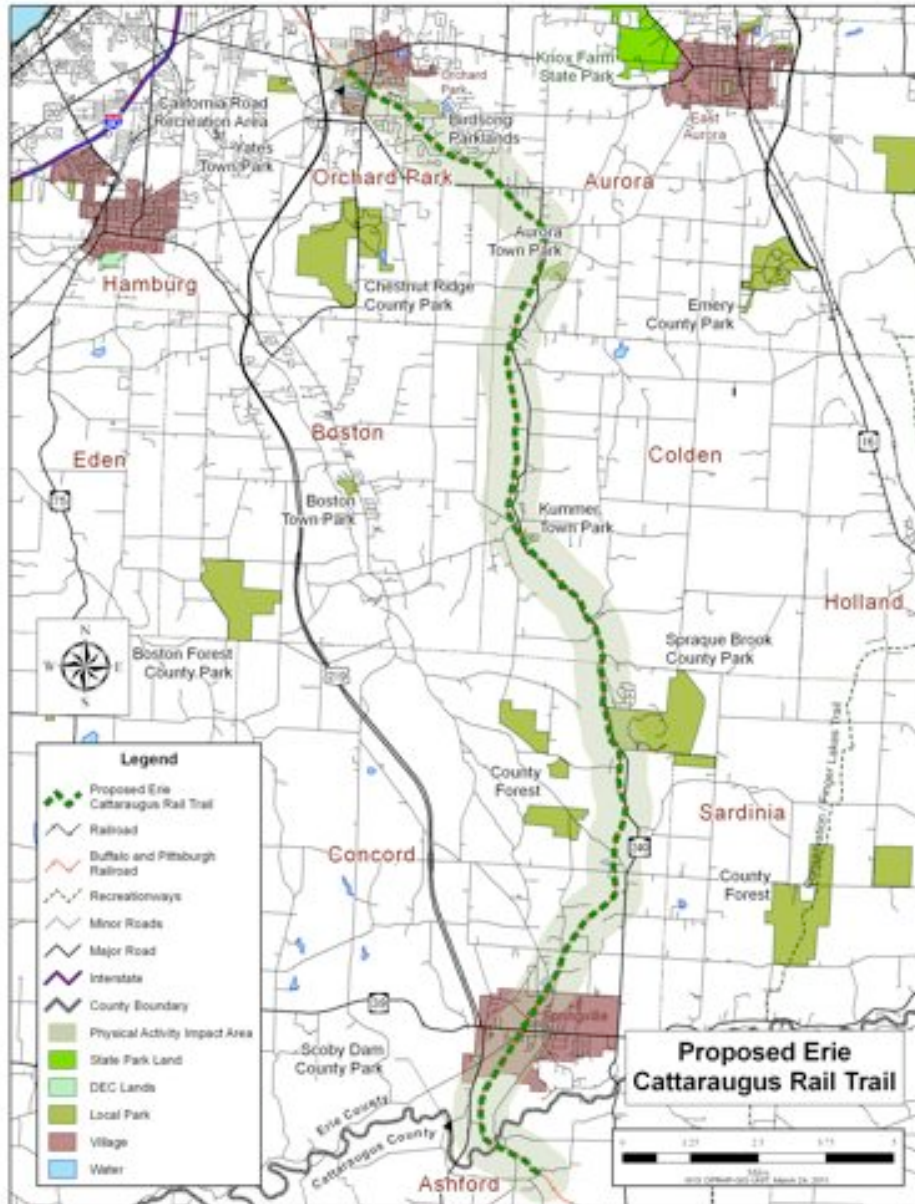
## Project Proposal

Development of a 26+ mile rail trail  
on the abandoned section of the  
Buffalo & Pittsburgh Railroad

Between Orchard Park & Ashford NY  
Connects 5 towns, 2 villages, 1 hamlet

Provide non-motorized recreation:

- Hiking, Biking
- Cross-Country Skiing
- Snow Shoeing
- Equestrian Activities
- Nature Appreciation



# Erie Cattaraugus Rail Trail

## Proposed Site

### Erie County:

Village of Orchard Park

Town of Orchard Park

Town of Aurora

Hamlet of West Falls

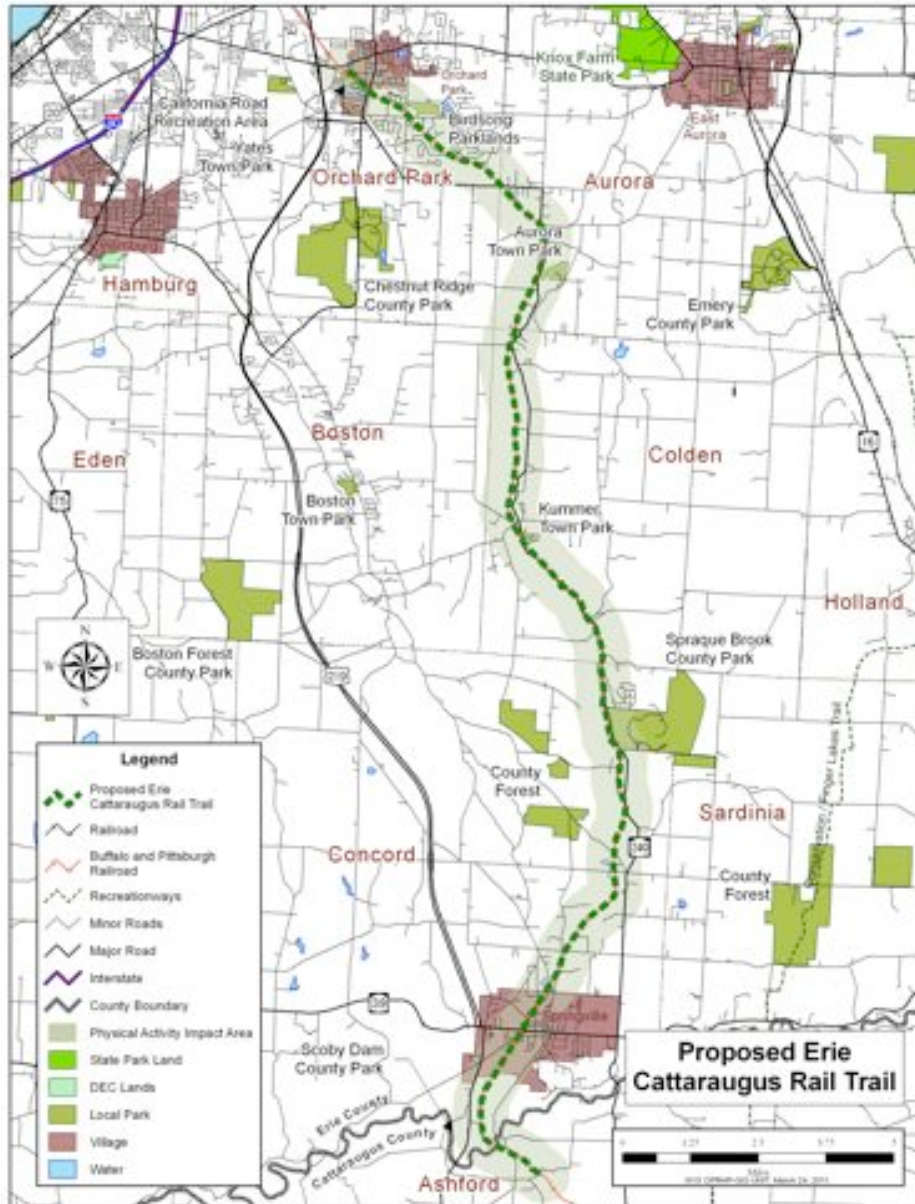
Town of Colden

Town of Concord

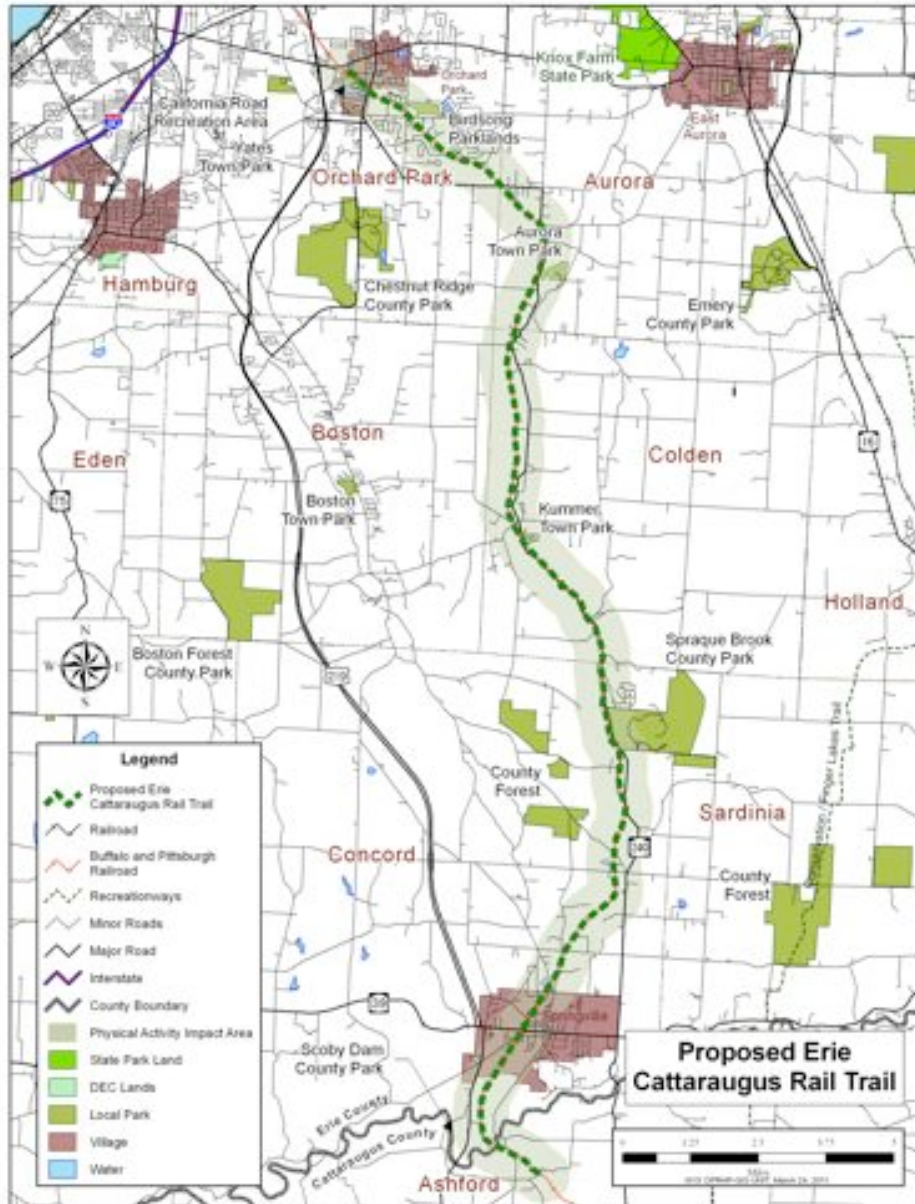
Village of Springville

### Cattaraugus County:

Town of Ashford



# Erie Cattaraugus Rail Trail

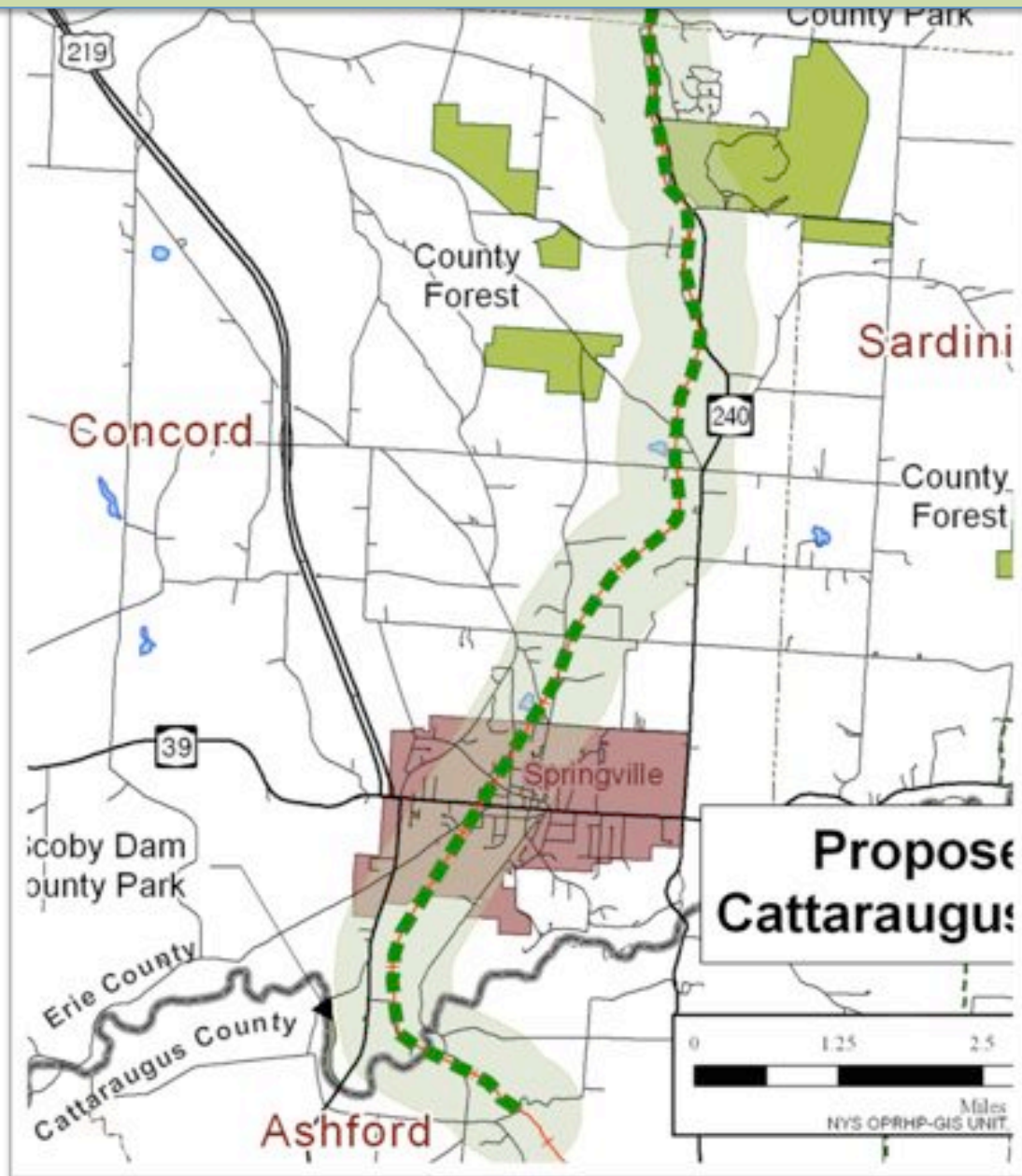


## COMMUNITY PROFILE:

- Community Demographics
- ROW Location & Condition
- Adjacent Property
- Review 6 Health Factors
  - Transportation
  - Education
  - Community
  - Health and Lifestyle
  - Environment
  - Economic Development
- Barriers To Trail Development
- Strategies Supporting Development



## Erie Cattaraugus Rail Trail



### Town of Concord Erie County

#### DEMOGRAPHICS

8,376 population 2009

4,211 outside village

25% under 18

15% 65 or older

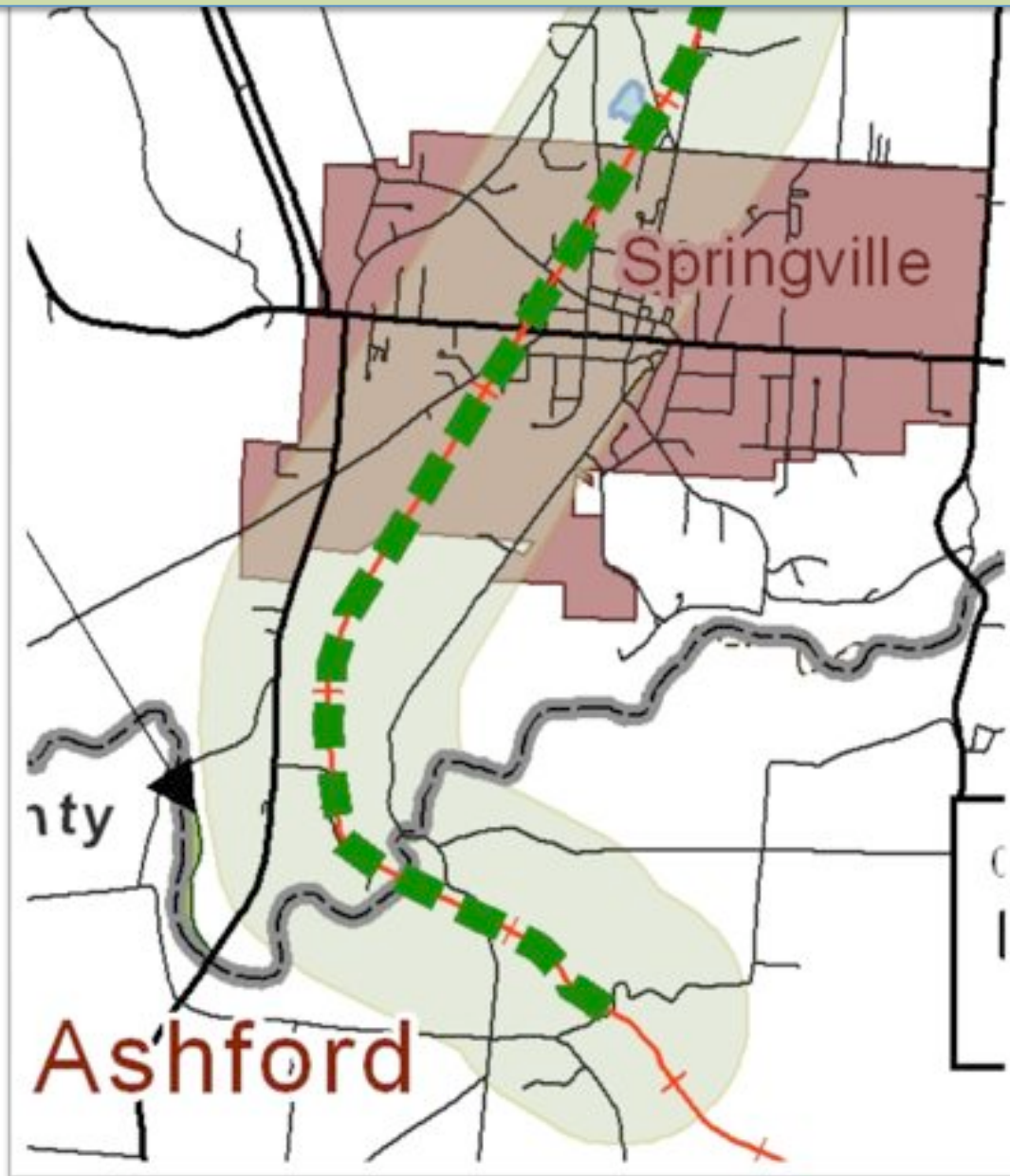
5.4% HH under poverty line

27.2% HH < \$25,000

1,122 acres parks & forests

Source: Regional Knowledge Network 2011  
Population estimate 2009  
EC GIS Mapping Service

## Erie Cattaraugus Rail Trail



### Village of Springville Erie County

#### DEMOGRAPHICS

4,165 population 2009

25% under 18

19% 65 or older

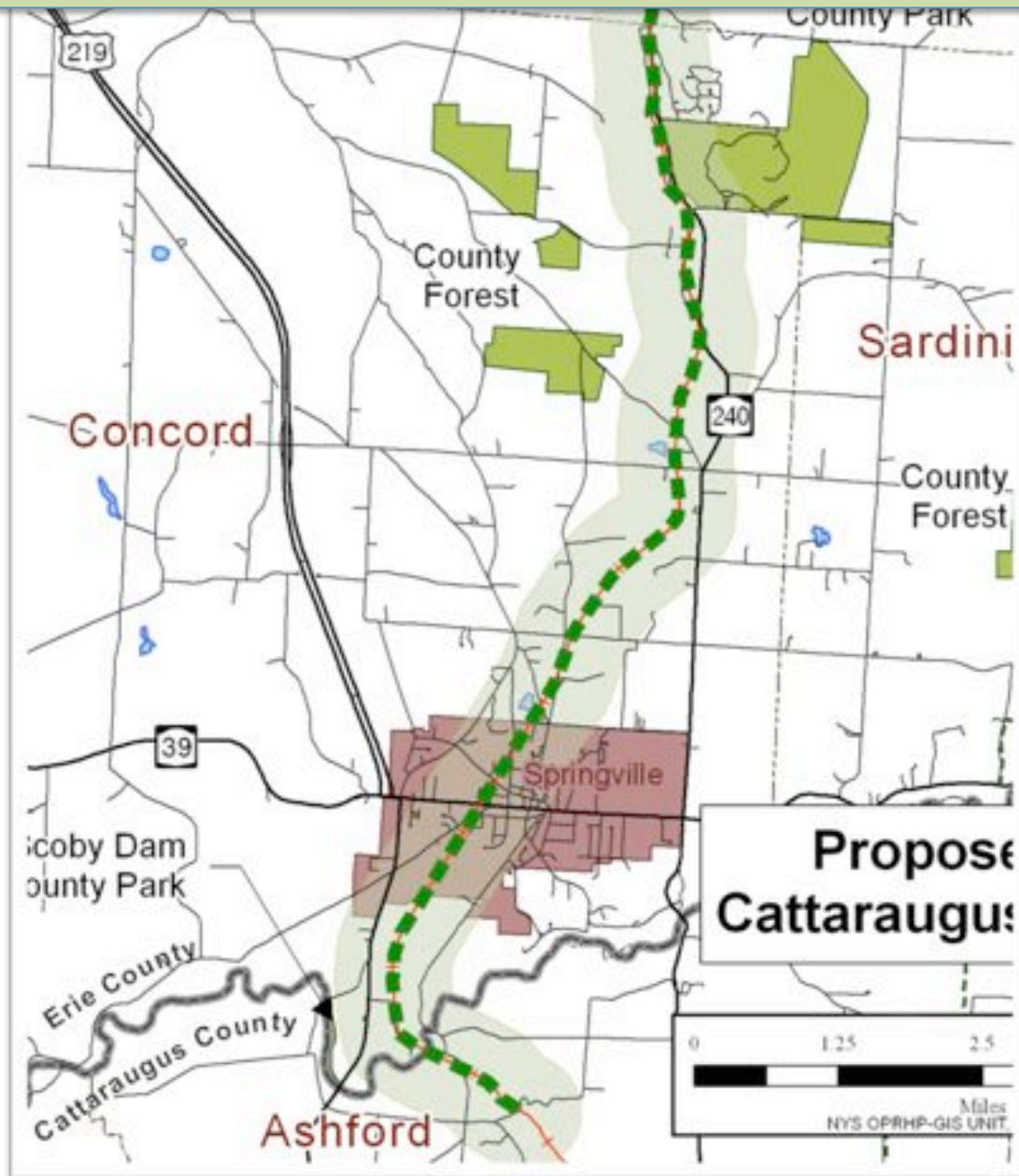
6.7% HH under poverty line

31.1% HH < \$25,000

0.4 acre park Fiddlers Green

Source: Regional Knowledge Network 2011  
2009 Population estimate  
EC GIS Mapping Service

## Erie Cattaraugus Rail Trail



### Town of Concord Erie County

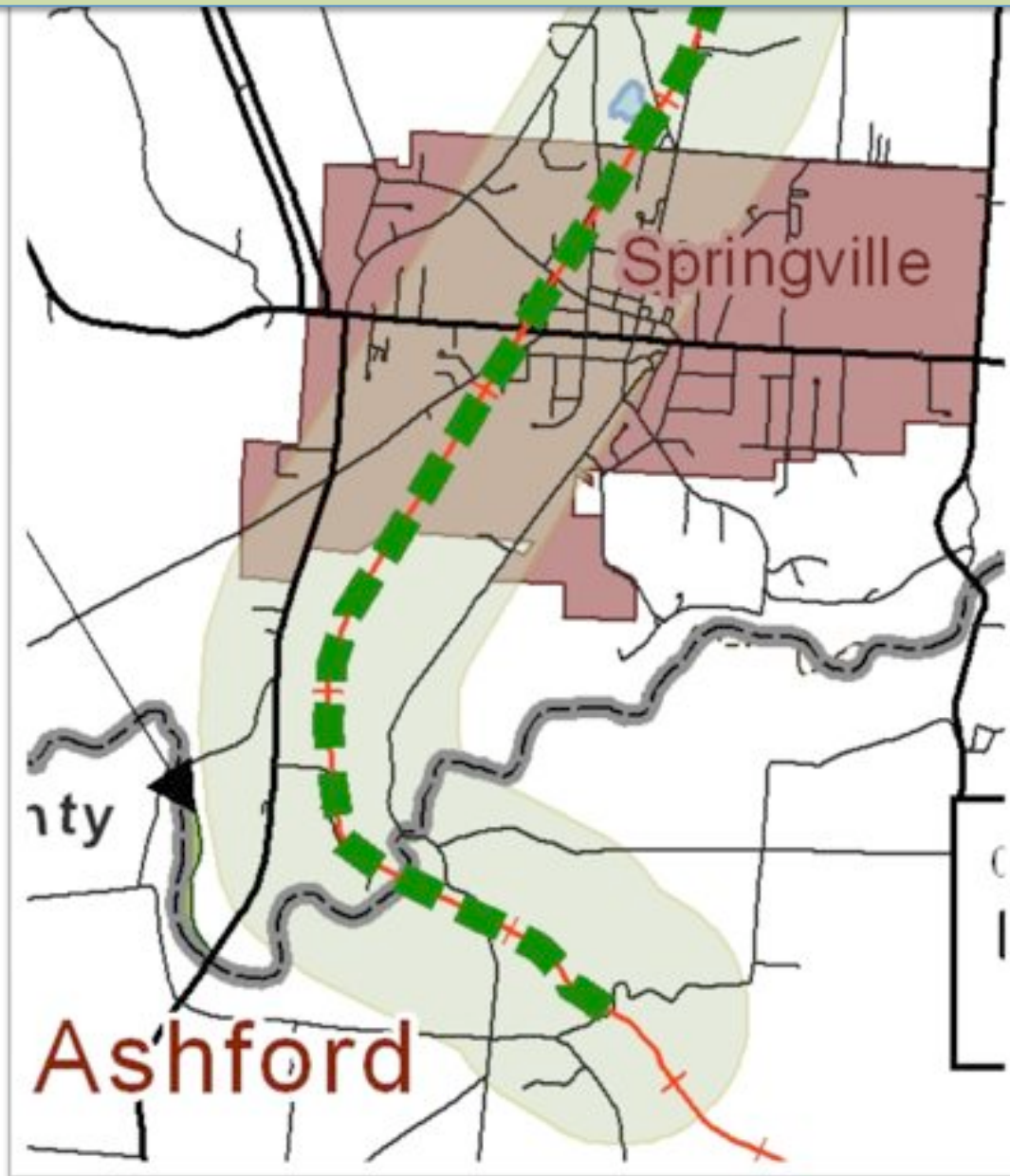
**Length:** 8.2 miles

**Location:** Runs North-South through the entire town, passing through the village of Springville and across Cattaraugus Creek

**Condition:** RR service is ended  
The track and ties are removed



## Erie Cattaraugus Rail Trail



### Village of Springville Erie County

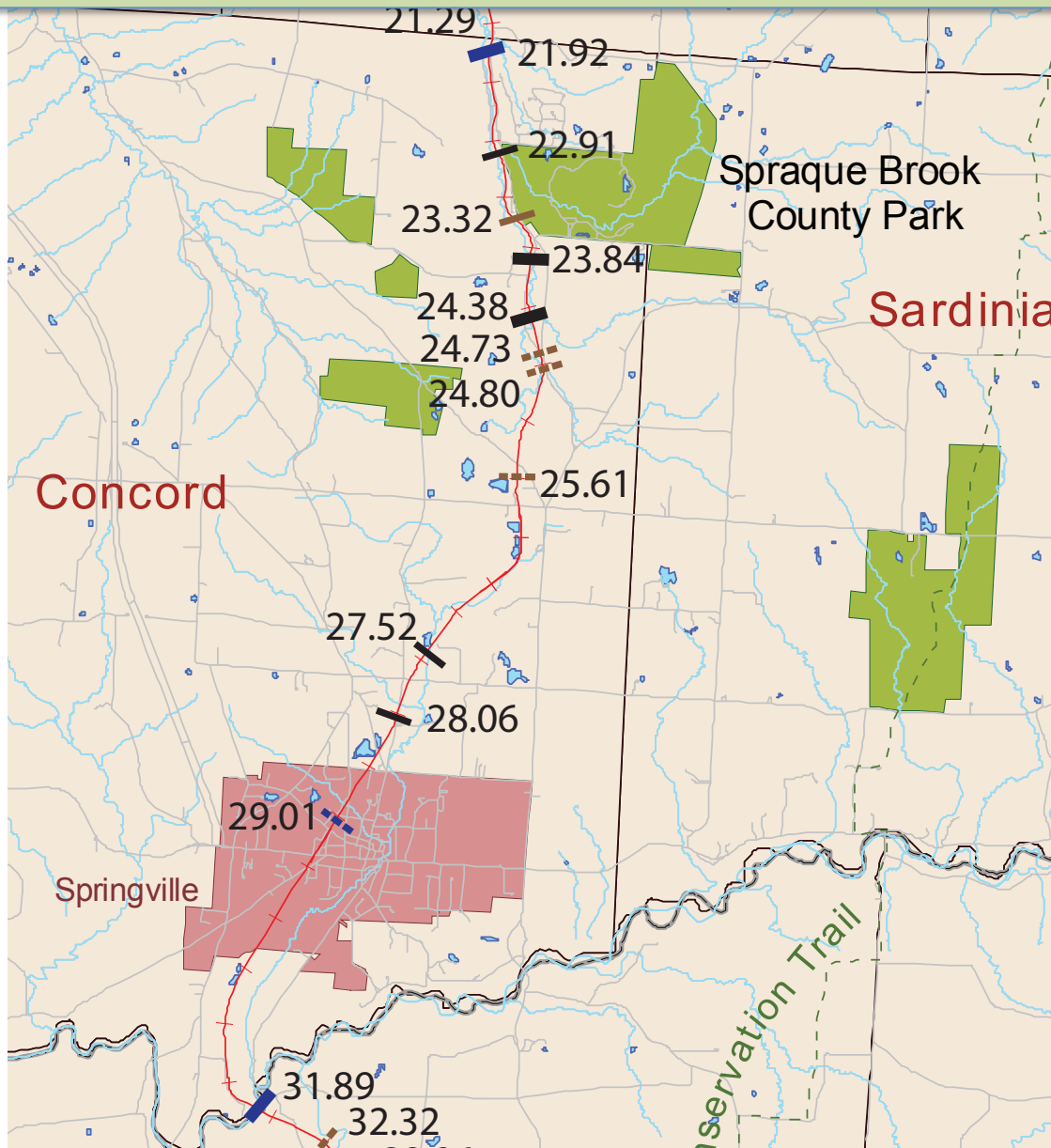
**Length:** 1.8 miles

**Location:** Runs North - South through the western side of the village.

**Condition:** The RR service is ended and the track and ties are removed.



# Erie Cattaraugus Rail Trail



## Town of Concord Village of Springville Erie County

### Bridges: 12

Mile	Type	Length	Crossing	Year Built
21.92	DPG	30'-0"	Spring Brook	1913
22.91	IBMS	76'-0"	Stream	1975
23.32	Rail Top	8'-0"	Cattle Pass	1913
23.84	TPG	85'-9"	Caz. Creek	1904
24.38	TPG	85'-9"	Stream	1914
24.73	Timber	22'-0"	Stream	1929
24.80	Timber	43'-4"	Stream	1931
25.61	Timber	8'-3"	Cattle Pass	1923
27.52	IBMS	24'-0"	Stream	1923
28.06	IBMS	24'-0"	Stream	1923
29.01	CMP	6'-0"	Stream	1959
31.89	DPG/DRT	779'-9"	Catt. Creek	1897

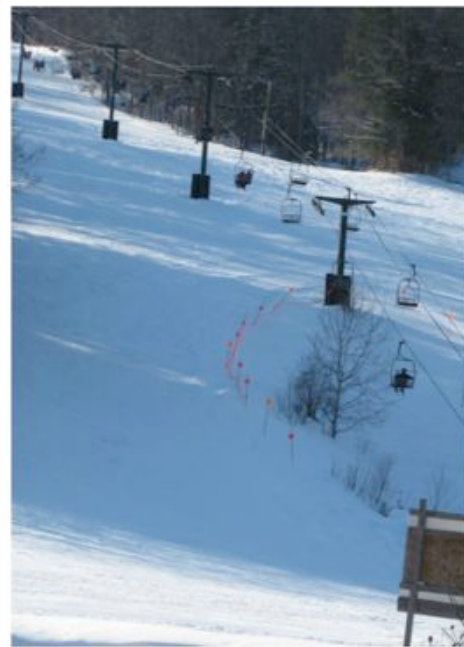
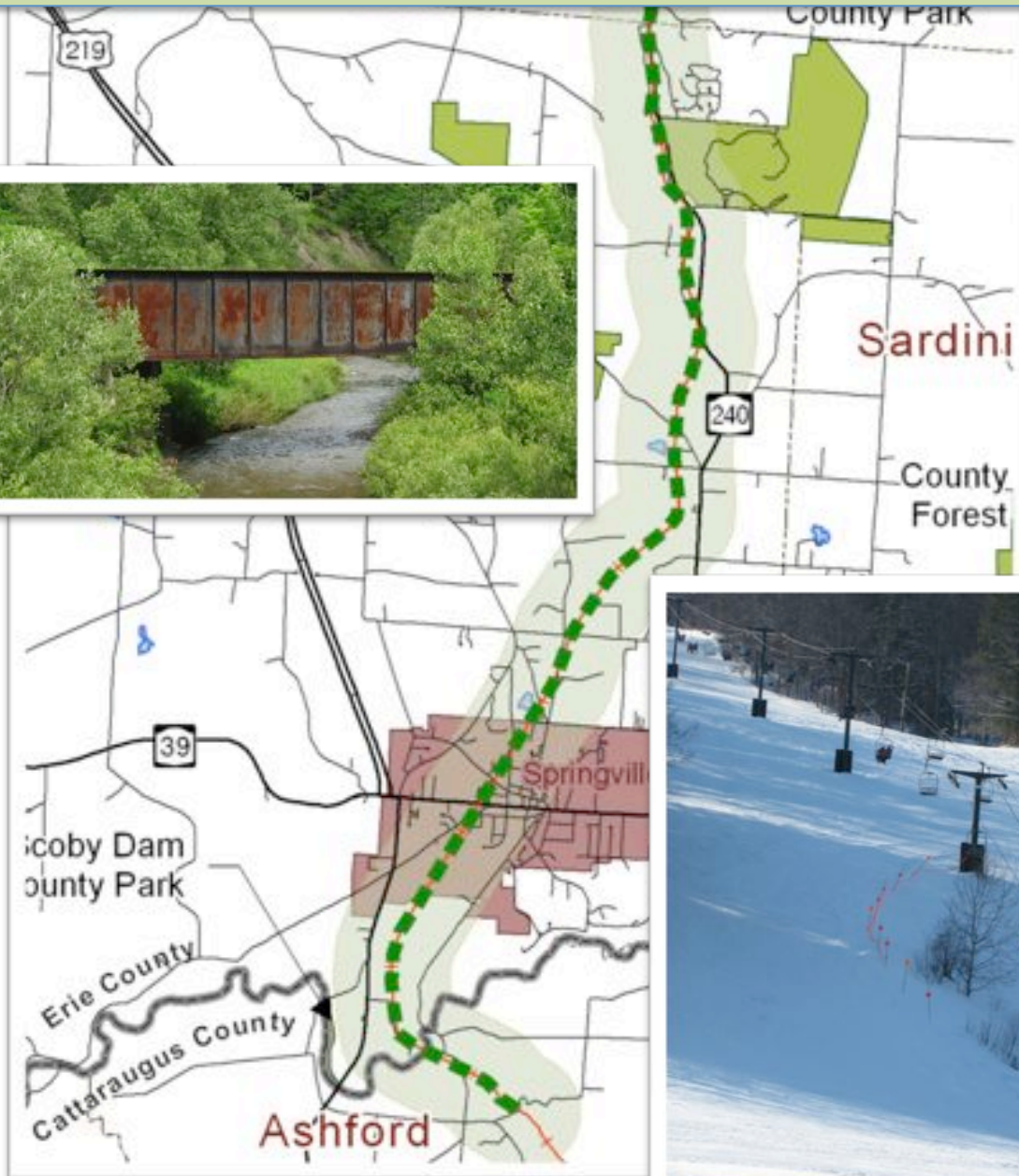
# Erie Cattaraugus Rail Trail

## Town of Concord Erie County

### ADJACENT PROPERTY

#### 122 Parcels

- 49 residential
- 24 vacant
- 4 commercial
- 3 golf course
- 5 ski area
- 10 agriculture
- 1 private forest
- 5 government owned
- 2 utilities
- 16 railroad
- 3 no classification





# Erie Cattaraugus Rail Trail

## Village of Springville Erie County

### ADJACENT PROPERTY

71 parcels

- 31 residential
- 11 vacant
- 15 commercial
- 1 school
- 3 village
- 8 railroad
- 2 no classification



# Erie Cattaraugus Rail Trail



## Town of Concord Erie County

### TRANSPORTATION

ROW parallels Route 240/State Rd.

(0) Rt. 240 crossings

(11) road crossings

(1) abandoned RR crossing

Creek crossing

(4) W Branch Cazenovia Creek

(4) Spring Brook

(1) Cattaraugus Creek

10 bridges – culverts to trestle

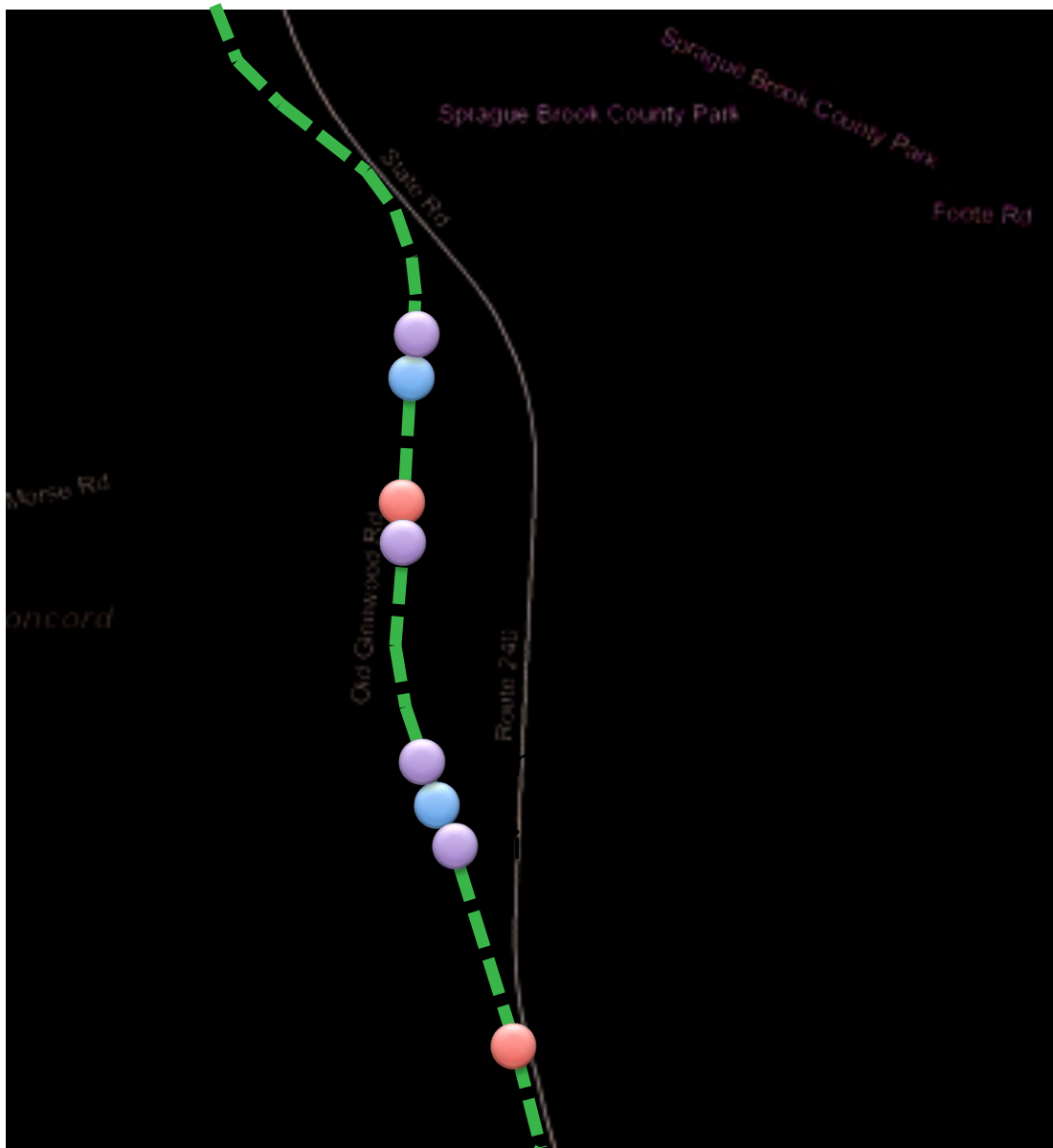
No town sidewalks, yes village

Walkers & bicyclists use road side

No bus stops or park & ride



# Erie Cattaraugus Rail Trail




## Town of Concord Erie County

### TRANSPORTATION

ROW parallels Route 240/State Rd.

(0) Rt. 240 crossings

 (11) road crossings

 (1) abandoned RR crossing

Creek crossing 

(4) W Branch Cazenovia Creek

(4) Spring Brook

(1) Cattaraugus Creek

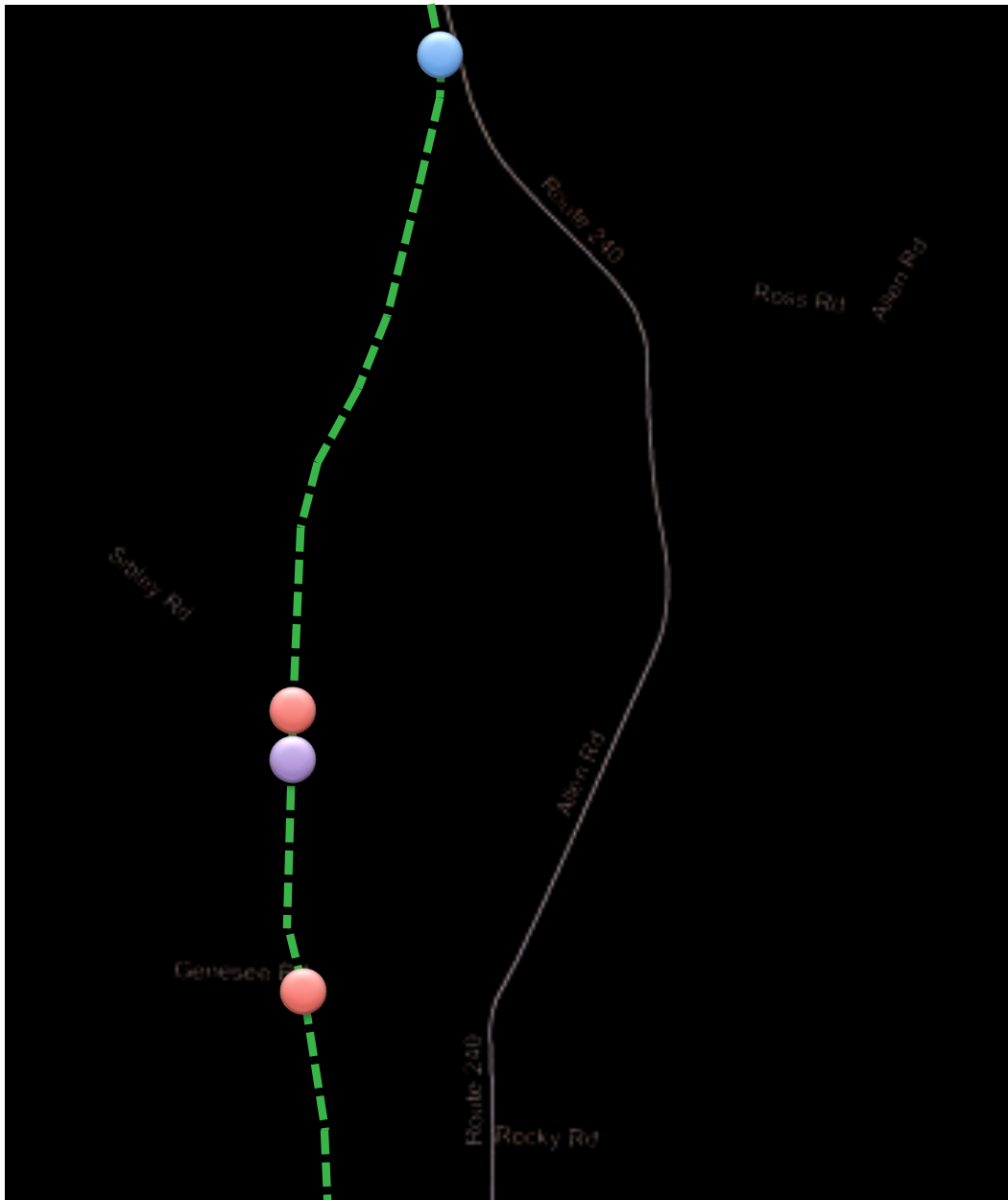
10 bridges – culverts to trestle 

No town sidewalks, only village

Walkers & bicyclists use road side

No bus stops or park & ride

# Erie Cattaraugus Rail Trail



## Town of Concord Erie County

### TRANSPORTATION

ROW parallels Route 240/State Rd.

(0) Rt. 240 crossings

● (11) road crossings

● (1) abandoned RR crossing

Creek crossing ●

(4) W Branch Cazenovia Creek

(4) Spring Brook

(1) Cattaraugus Creek

10 bridges – culverts to trestle ●

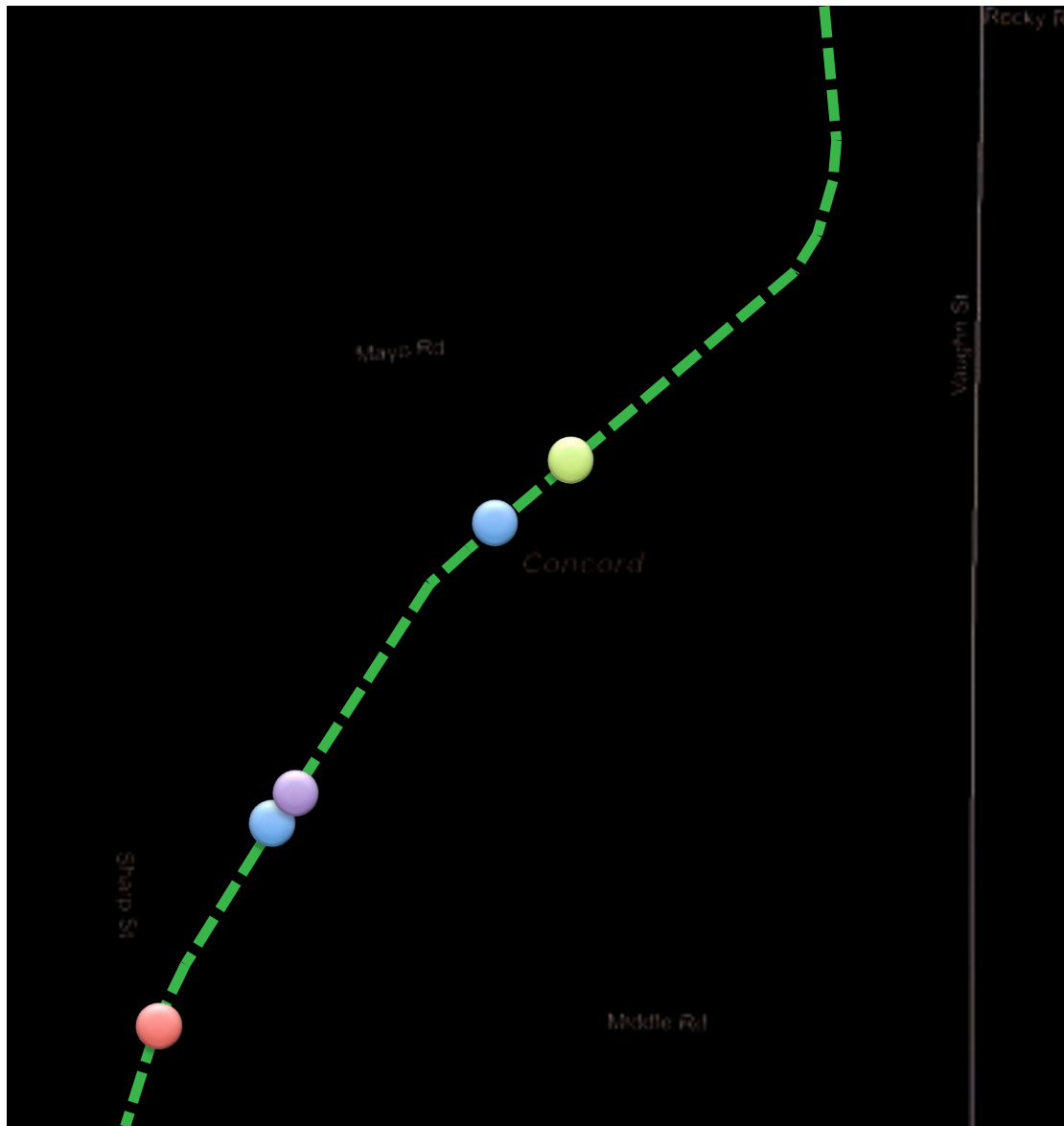
No town sidewalks, only village

Walkers & bicyclists use road side

No bus stops or park & ride



# Erie Cattaraugus Rail Trail



## Town of Concord Erie County

### TRANSPORTATION

ROW parallels Route 240/State rd.

(0) Rt. 240 crossings

 (11) road crossings

 (1) abandoned RR crossing

Creek crossing 

(4) W Branch Cazenovia Creek

(4) Spring Brook

(1) Cattaraugus Creek

10 bridges – culverts to trestle 

No town sidewalks, only village

Walkers & bicyclists use road side

No bus stops or park & ride

# Erie Cattaraugus Rail Trail



## Town of Concord Village of Springville Erie County

### TRANSPORTATION

ROW parallels Route 240/State Rd.

(0) Rt. 240 crossings

(11) road crossings

(1) abandoned RR crossing

Creek crossing

(4) W Branch Cazenovia Creek

(4) Spring Brook

(1) Cattaraugus Creek

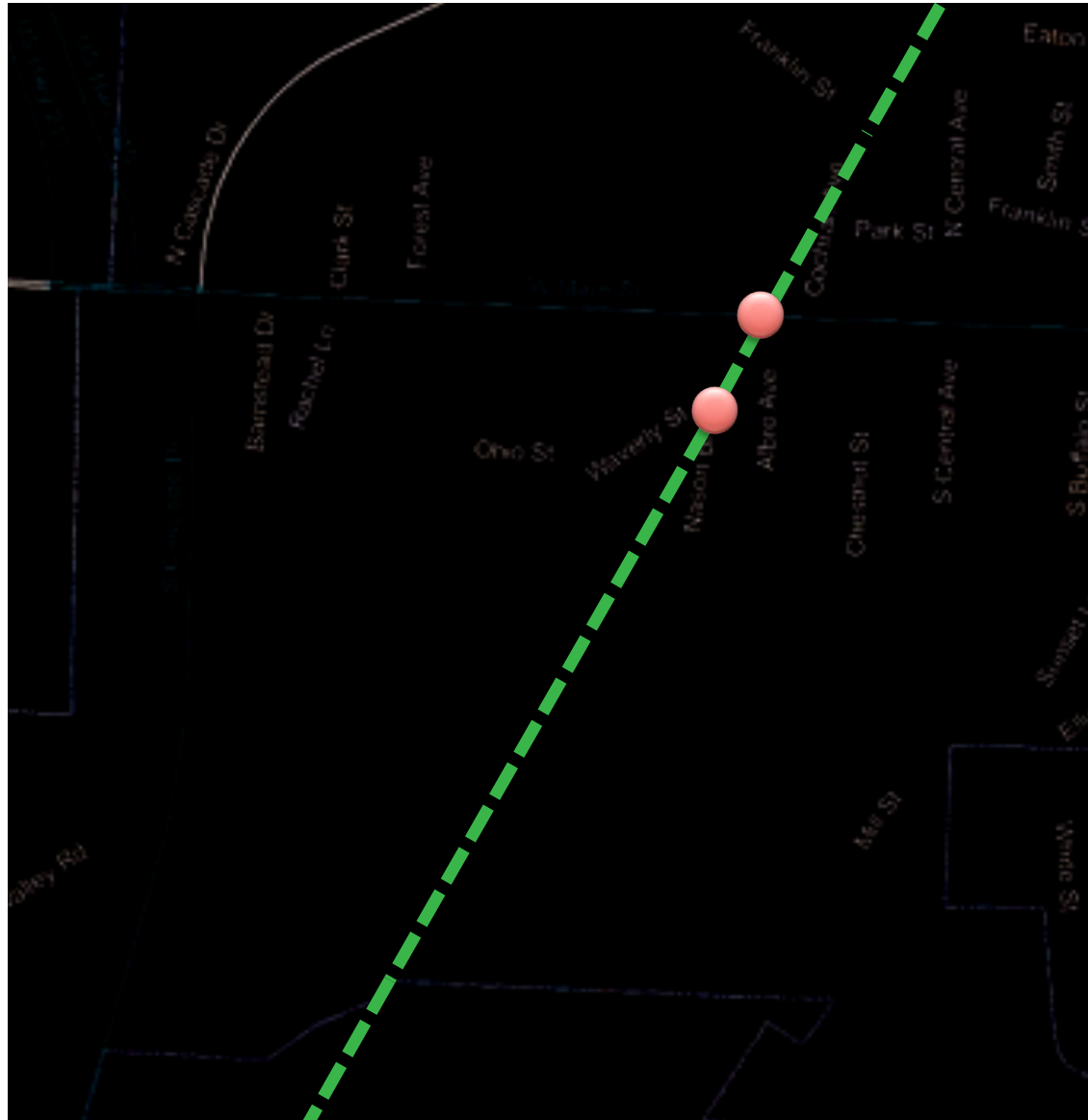
10 bridges – culverts to trestle

No town sidewalks, only village

Walkers & bicyclists use road side

No bus stops or park & ride

# Erie Cattaraugus Rail Trail



## Village of Springville Erie County

### TRANSPORTATION

ROW parallels Route 240/State Rd.

(0) Rt. 240 crossings

● (11) road crossings

● (1) abandoned RR crossing

Creek crossing ●

(4) W Branch Cazenovia Creek

(4) Spring Brook

(1) Cattaraugus Creek

10 bridges – culverts to trestle

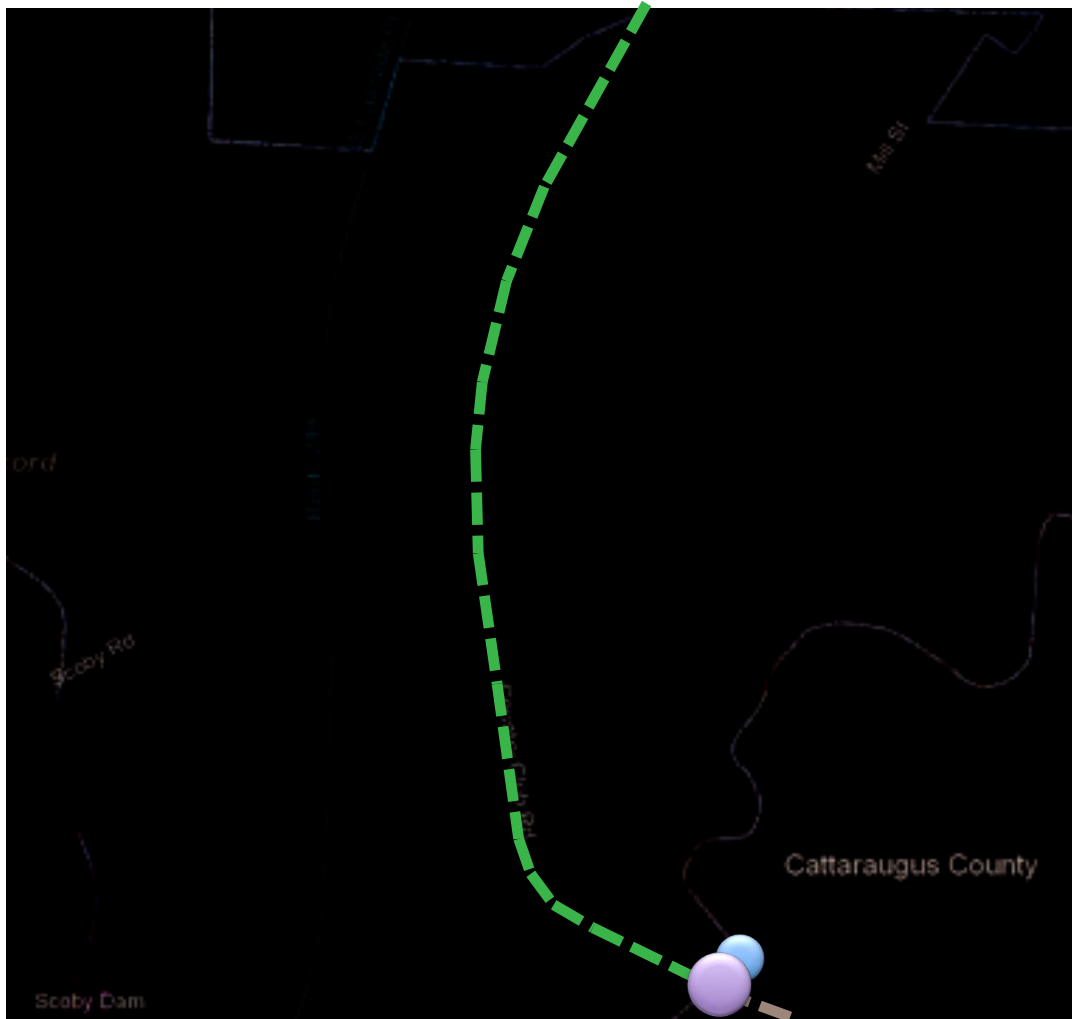
No town sidewalks, only village

Walkers & bicyclists use road side

No bus stops or park & ride



# Erie Cattaraugus Rail Trail



## Town of Concord

Village of Springville

Erie County

## TRANSPORTATION

ROW parallels Route 240/State Rd.

(0) Rt. 240 crossings

(11) road crossings

(1) abandoned RR crossing

Creek crossing

(4) W Branch Cazenovia Creek

(4) Spring Brook

(1) Cattaraugus Creek

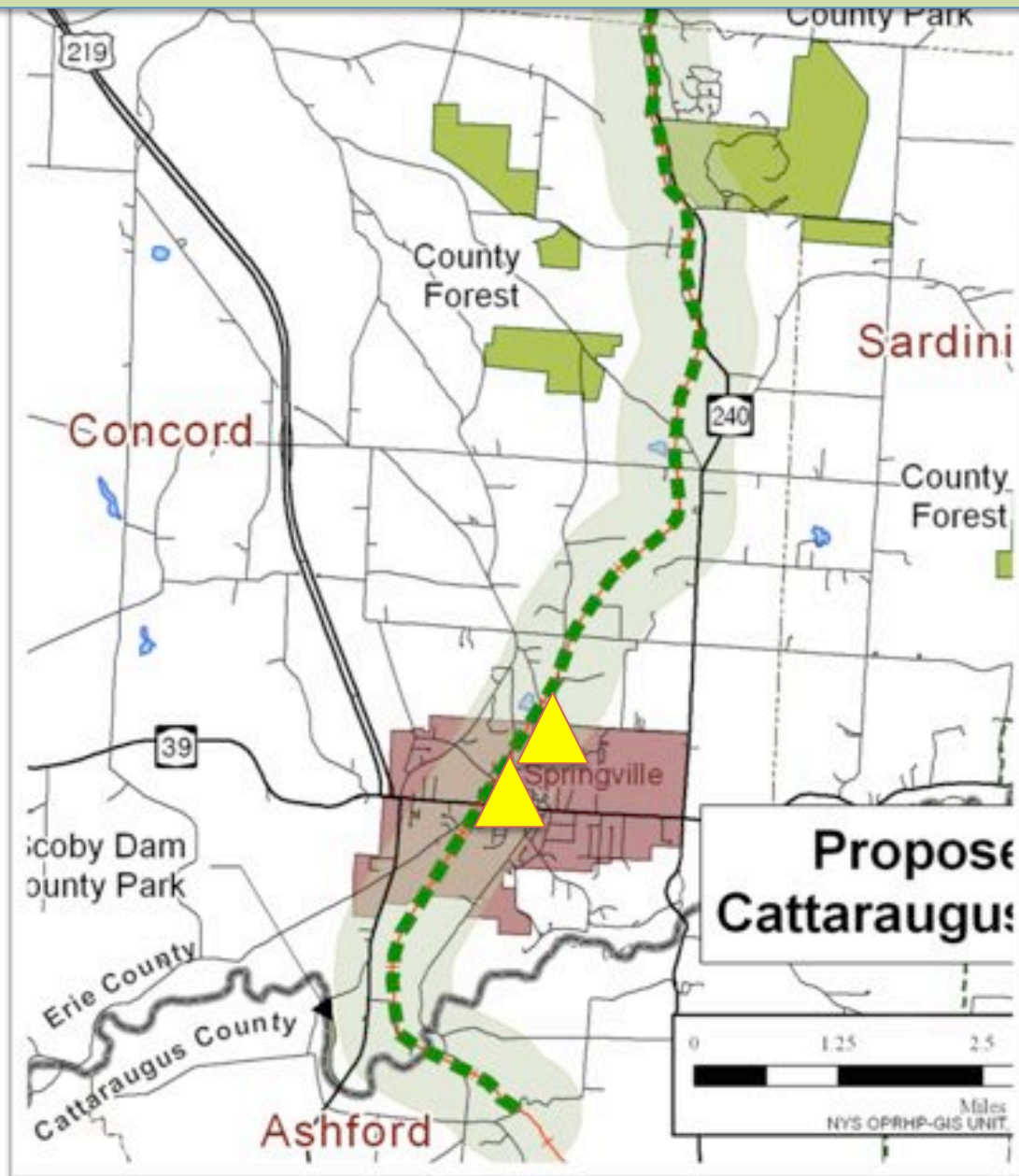
10 bridges – culverts to trestle

No town sidewalks, only village

Walkers & bicyclists use road side

No bus stops or park & ride

# Erie Cattaraugus Rail Trail



**Town of Concord**  
**Village of Springville**  
Erie County

## EDUCATION

Adjacent to:   
Springville-Griffith High  
Athletic Fields

Early Bird Preschool

Connect by village sidewalk:

Springville Elementary

Springville Middle

Early Childhood Education,  
School for the Handicapped

Church Preschools

Youth Groups

# Erie Cattaraugus Rail Trail



**Town of Concord**  
**Village of Springville**  
Erie County

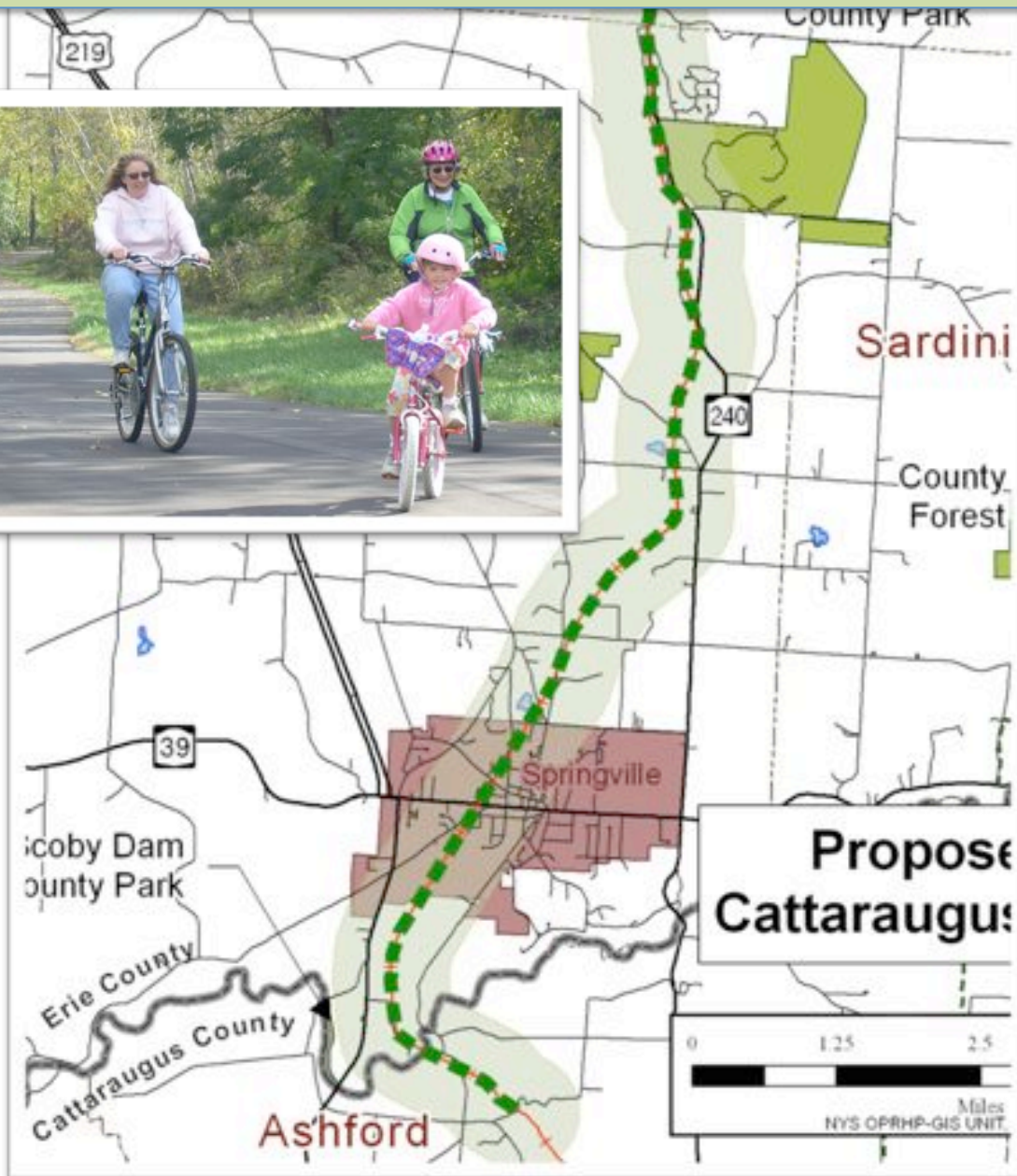
## COMMUNITY

Connects to:

-  Historic Business District
-  E. Concord Fire Depart.
-  Sprague Brook Park
-  Scoby Dam Park
-  Glenwood Business District
-  Kissing Bridge Ski Resort
-  Colden Tubing
-  Springville Country Club



# Erie Cattaraugus Rail Trail



**Town of Concord**  
**Village of Springville**  
Erie County

## HEALTH AND LIFESTYLE

Promote physical activity

Handicap Accessible

Accessible to all ages & abilities

Provide access to views & nature

Build community connections

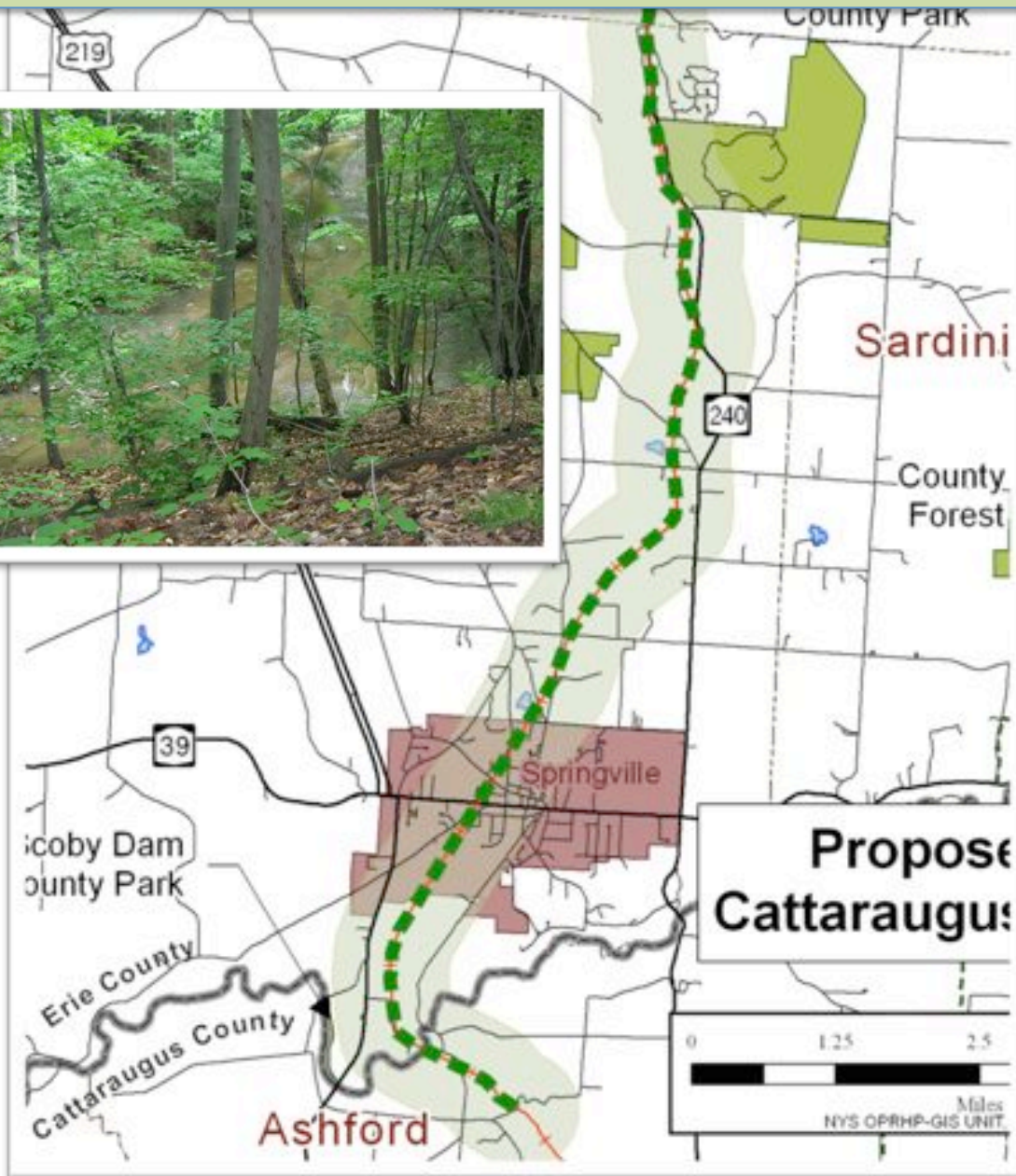
Reduce isolation

Stop nuisance activity

Provides a safer pedestrian route

Potential Amish carriage route

# Erie Cattaraugus Rail Trail



**Town of Concord**  
**Village of Springville**  
Erie County

## ENVIRONMENT

Located within two watersheds  
Connects to the west branch of  
Cazenovia Creek - runs north  
Spring Brook - runs south

Preserves a biological corridor  
Connects habitat

Regular trail maintenance can  
address drainage, windfall, dumping  
and other property concerns

Provides an active commuting route



# Erie Cattaraugus Rail Trail



**Town of Concord**  
**Village of Springville**  
**Erie County**

## ECONOMIC DEVELOP.

Support Local Businesses

Develop New Business

Influence Property Values

Attract local and non-local users,

Attract events and investment

Catt Bridge Overlook

5K, Biathlon

Site of Year Round Activity

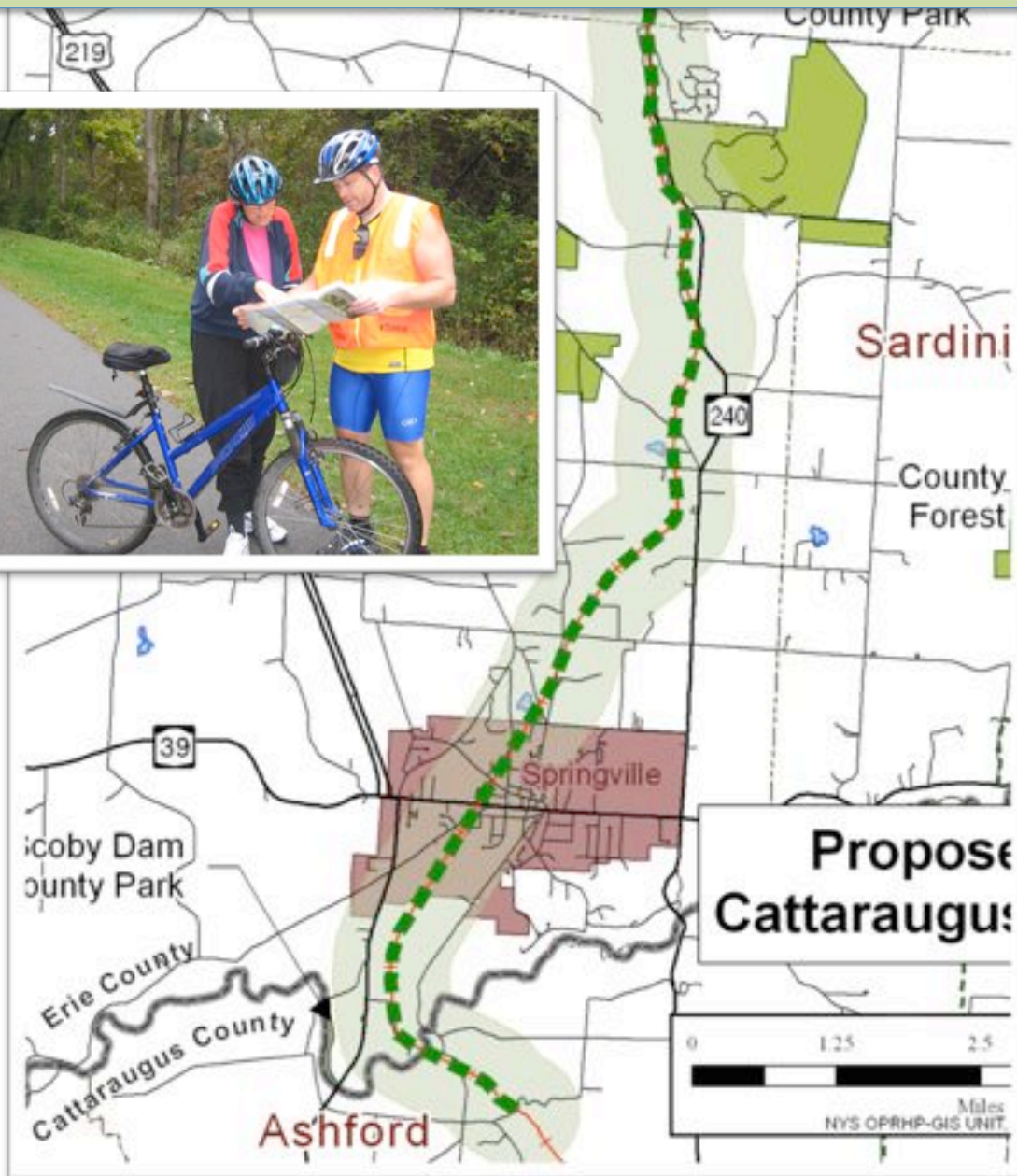
biking, hiking, nature and

fall foliage viewing, snow

shoeing, x-county skiing



# Erie Cattaraugus Rail Trail



**Town of Concord**  
**Village of Springville**  
Erie County

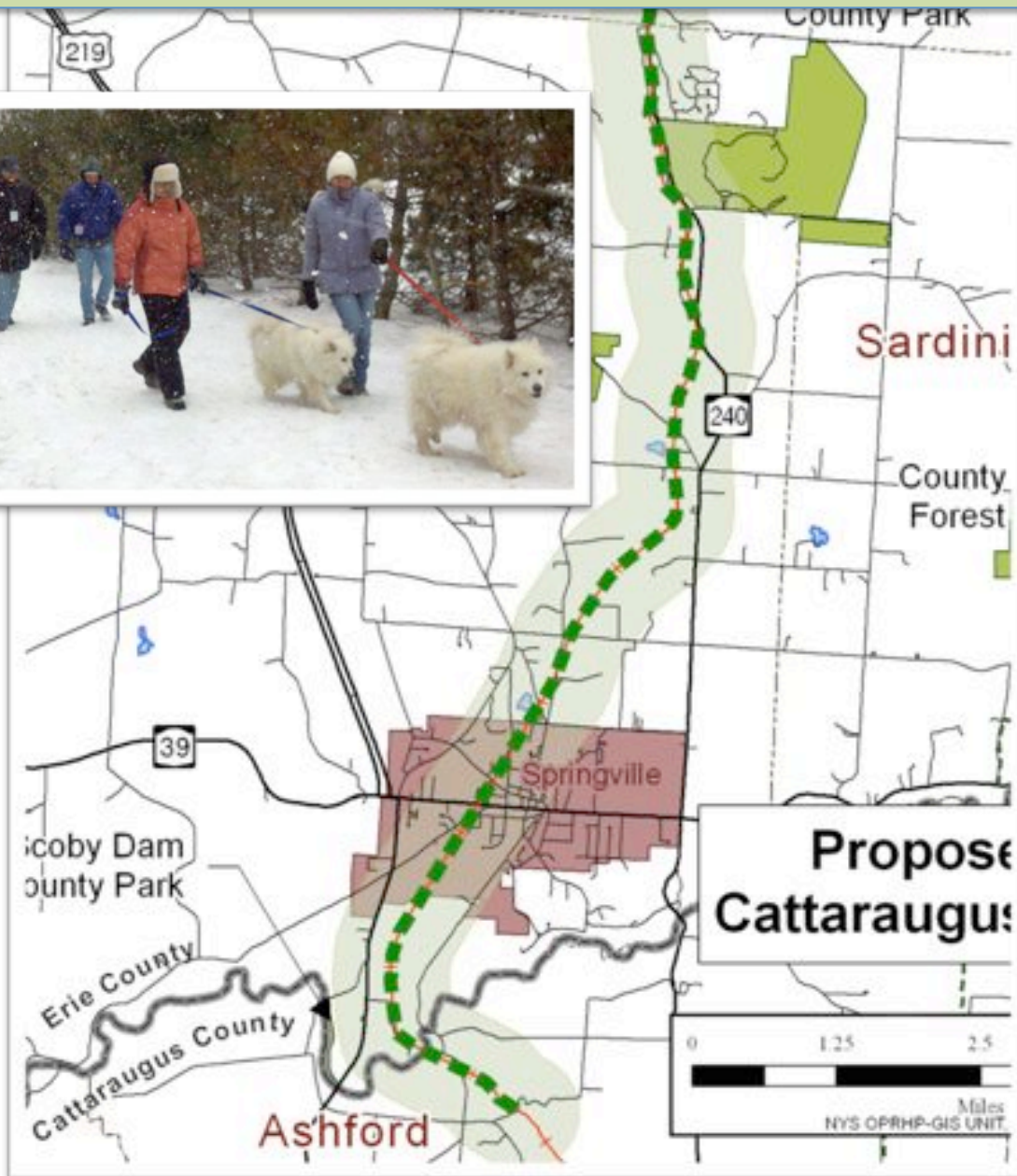
## BARRIERS

Lack of Town Support

NIMBY - Town residents

B&PR and NYS Parks inaction

# Erie Cattaraugus Rail Trail



**Town of Concord**  
**Village of Springville**  
Erie County

## STRATEGIES TO TRAIL DEVELOPMENT

Increase Community Awareness

Work closely with NYS Parks and Other trails organizations

Involve the Entire Community In Trail Vision and Design

Be Patient and Persistent  
Be Flexible and Creative



## Erie Cattaraugus Rail Trail



### Town of Concord and Village of Springville Erie County Community Overview



Prepared By:  
Anne Bergantz, MUP  
President  
Erie Cattaraugus Rail Trail, Inc.  
Oct 1, 2011





# Erie Cattaraugus Rail Trail

## Concord & Springville Community Overview





## Erie Cattaraugus Rail Trail



Town of Concord and  
Village of Springville  
Erie County and the  
Town of Ashford  
Cattaraugus County  
Community Overview



Prepared By:  
Anne Bergantz, MUP  
President  
Erie Cattaraugus Rail Trail, Inc.  
Oct 1, 2011